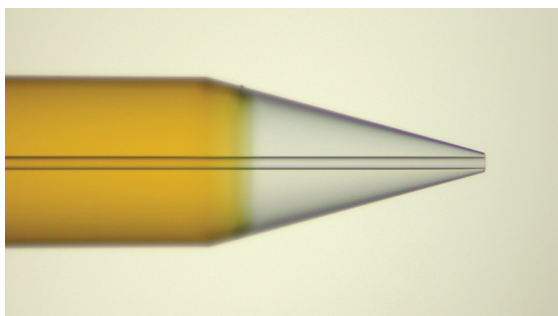


FOUNDATION™

PICOTIP POWERED®



SPECIFICATIONS

Manufactured from fused-silica tubing. TaperTip emitters are 50 cm long and can be cleaved to length using a diamond scribe (New Objective Part Number: SCRIBE). Precut emitters are 6.35 cm long, precision cut and polished for optimal connections; easy to use with no cleaving required.

Part Number

TT360-20-6.35-N-5-CT

Description

360 µm OD, 20 µm ID, 6.35 cm, uncoated, 5 per box, precut

Part Number

TT360-20-50-N-5

Description

360 µm OD, 20 µm ID, 50 cm, uncoated, 5 per box

Part Number

TT360-50-50-N-5

Description

360 µm OD, 50 µm ID, 50 cm, uncoated, 5 per box

Part Number

TT360-75-50-N-5

Description

360 µm OD, 75 µm ID, 50 cm, uncoated, 5 per box

Part Number

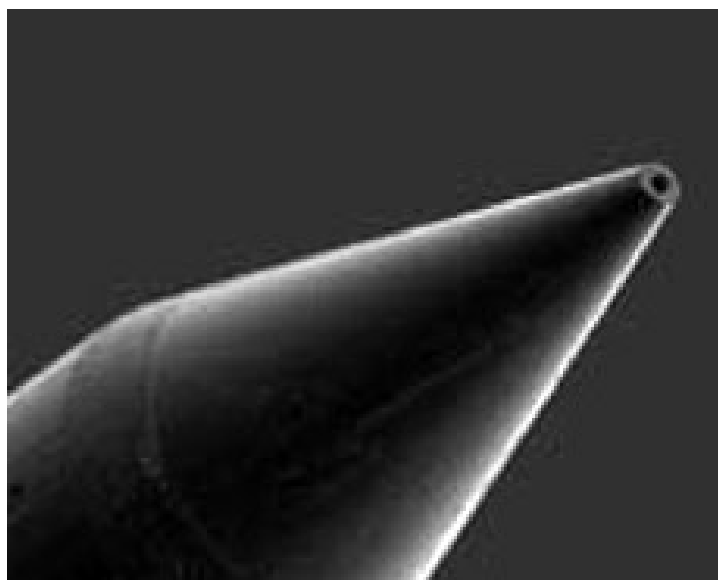
TT360-100-50-N-5

Description

360 µm OD, 100 µm ID, 50 cm, uncoated, 5 per box

FEATURES

- **Optimized:** Micro flow rates ranging from < 0.2 µl/min To > 3 µl/min
- **Robust:** No internal taper for reduced clogging
- **Rugged:** Engineered tip for increased mechanical stability
- **Lifetime:** Resistant to clogging, increasing lifetime and improving up time
- **Versatile:** Delivers sensitivity without compromising throughput
- **Flexible:** Variety of sizes and formats to meet demanding application requirements
- **Precise:** Precision manufacturing delivers stable spray for reduced variability and improved quantitative precision
- **Quantitative:** Well suited for quantitative workflows
- **Compatible:** Manufactured using the highest-grade fused silica tubing for MS compatibility
- **Reliable:** Rigorous video inspection ensuring consistent tip geometry
- **Reproducible:** Stringent tip specifications provide consistent spray performance and reduced variability run-to-run, operator-to-operator
- **Performance:** The highest performance emitter on the market



FOUNDATION™ PICOTIP POWERED®



SPECIFICATIONS

Durable, rugged, conductive stainless-steel emitters. Not recommended for samples sensitive to metal binding or adduction. Either 3.5 or 5 cm in length, each are precision trimmed and polished.

Part Number

MT320-50-5-5

Description

320 µm OD, 50 µm ID, 5 cm, 5 per box

Part Number

MT320-50-3.5-5

Description

320 µm OD, 50 µm ID, 3.5 cm, 5 per box

Part Number

MT320-100-5-5

Description

320 µm OD, 100 µm ID, 5 cm, 5 per box

Part Number

MT320-100-3.5-5

Description

320 µm OD, 100 µm ID, 3.5 cm, 5 per box

FEATURES

- **Optimized:** Micro flow rates ranging from $< 0.2 \mu\text{L} / \text{min}$ to $> 3 \mu\text{L} / \text{min}$
- **Robust:** No internal taper for reduced clogging
- **Rugged:** Engineered tip for increased mechanical stability
- **Lifetime:** Highly durable metal emitter resistant to clogging delivers $>1,000$ hours of continuous operation
- **Reusable:** Durable stainless emitter can be sonicated and reused
- **Flexible:** Variety of sizes to meet demanding application requirements
- **Precise:** Precision manufacturing delivers stable spray for reduced variability and improved quantitative precision
- **Compatible:** Manufactured using the highest-grade stainless-steel tubing for MS compatibility
- **Reliable:** Rigorous video inspection ensuring consistent tip geometry
- **Throughput:** Engineered for higher flow rates and long lifetimes
- **Reproducible:** Stringent tip specifications provide consistent spray performance and reduced variability run-to-run, operator-to-operator
- **Conductive:** Stainless steel provides conductivity for ESI
- **Performance:** The highest performance emitter on the market

